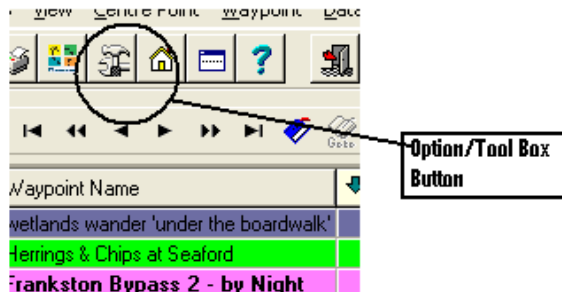
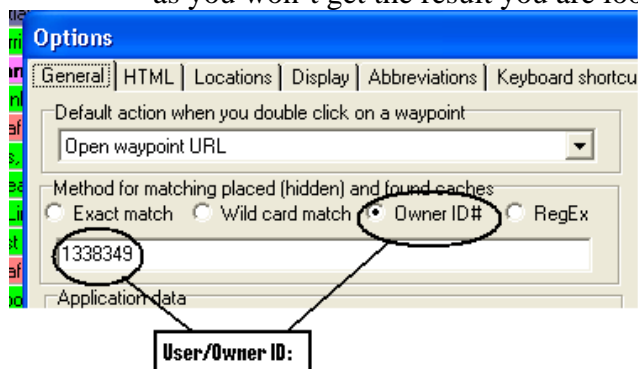


Downloading your Stat to your Cache Page.

- To get your **Cache Stats** to your **GC Public Profile** you first need to make sure that you have all the **right setting setup in GSAK**.



- Click** on the **Options/Tool Box Tab** you Should see the screen that you which Should be General Tab if not Click on the General Tab & check that your **User ID** is correct.
See Screen shot below for example.
(Note: I have used me Details in the examples so don't use these numbers as you won't get the result you are looking to achieve)



This is the best way to get the best results when you export your stats.
Your User ID: can also be found on any of the caches you have Hidden.
See example below.

Edit Current Waypoint

Waypoint Code:

Name:

Country:

State: County:

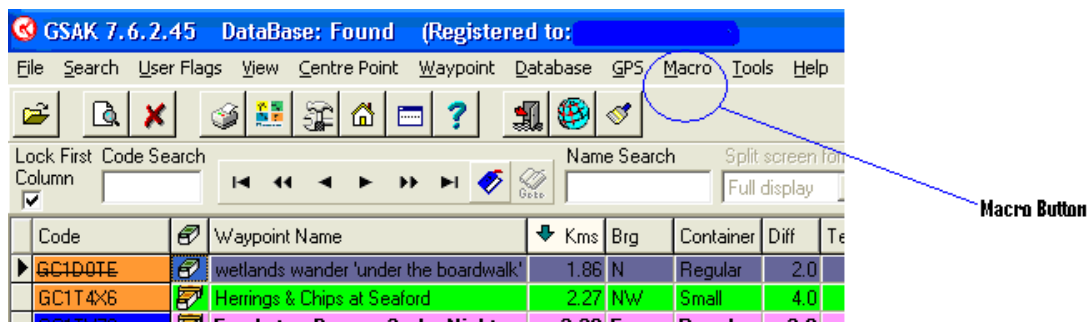
Type: Container: Lock: ☐ (Stc)

Owner Name: Owner ID: First to

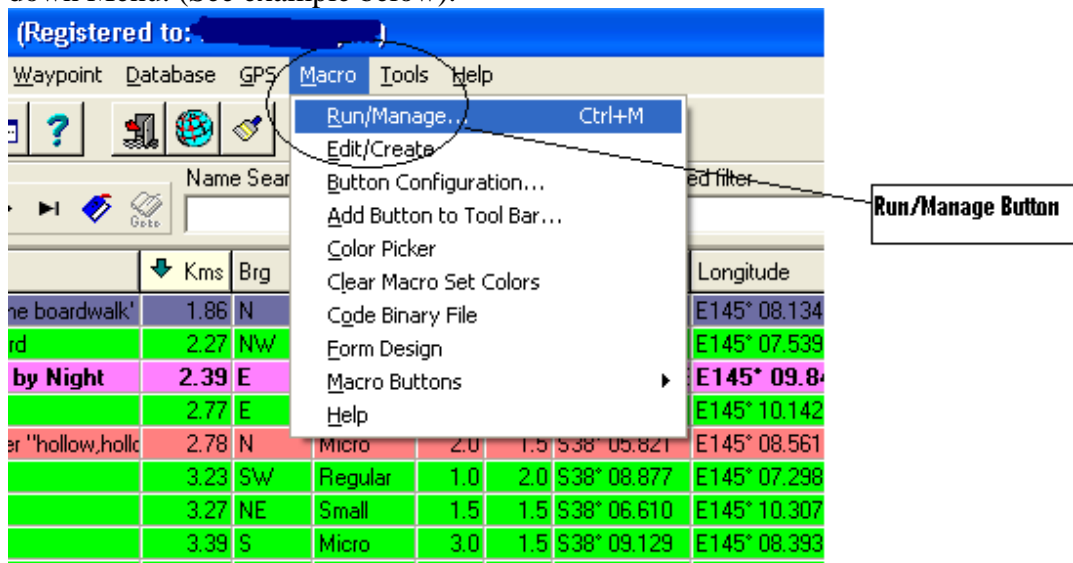
User/Owner ID:

- Ok now You have set your **User ID**: (Not Mine from the examples) you can now exit this screen.

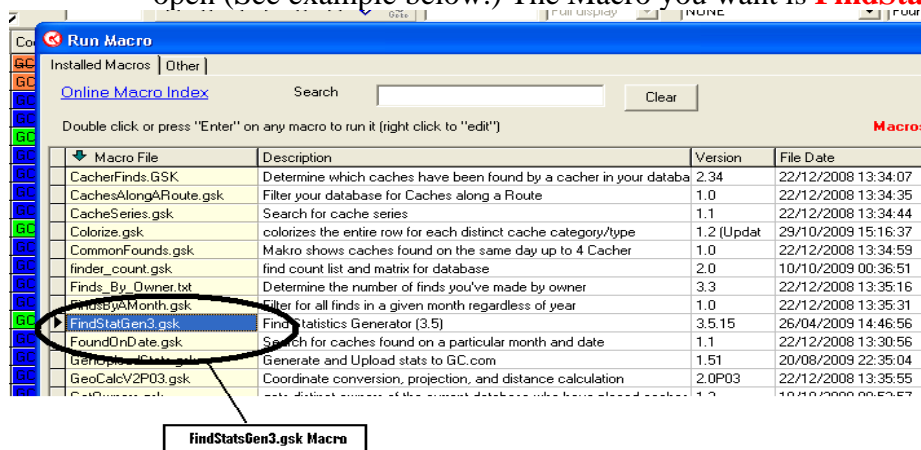
Now **Click The Macro Tab** on the **Tool Bar**. (See example's below.)



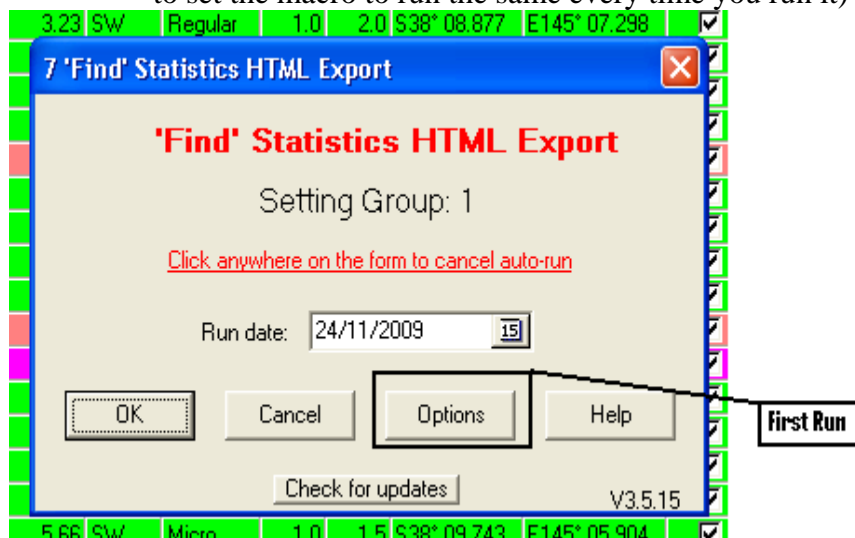
After you have **Clicked** on the **Macro Tab** on the tool bar you will see the **Run/Manage Marco** from the **Macro Tab Click on the Run/Manage** from the Drop down Menu. (See example below).



- Now once you have **Clicked** on this **Menu** the Macro Library should now open (See example below.) The Macro you want is **FindStatsGen3.gsk**.



- After you have **Clicked** on the **Run tab** the Macro will start running. (See example below this Screen you will need to Click on the options Tab to set the macro to run the same every time you run it)



- Now that you have **Clicked** on the **Option's Tab** the next screen you will see will be the setting Screen these setting are the setting I use & they seem to work well for me.

Find Statistics HTML Export Options

'Find' Statistics HTML Export

Your User Name: Rigger64

Found caches Database: Found OK?

Placed caches Database: Owned Edit

Include Own Finds in Placed? ☐ Sorts? ☐

Milestone separation: 50 Edit

Use current sort order for milestones? ☐ Types? ☒ (Normally leave unchecked)

FTF separation: 1

'Home' Location name: Home

Style color: Green

Language: English

Exclude Locationless? ☐

Show Difficulty/Terrain Chart? ☒

Show Cumulative Finds Chart? ☒

Use Pie Charts? ☐

Auto-Run macro next time (with delay) ☒

Center Output? ☐

User Geocaching Name: Rigger64

Show years in descending order? ☒

Show all years ☒

Shaded bars

Use shaded bars? ☐

Shaded bar image source (Select Remote for GC Profile) Local ☐ Remote ☐

Select report sections and display order:

Reset Defaults

Notes Numbers Special Maps

Section Order

Setting Group: 1 2 3 4 Save

OK Cancel Help

- Once you have set these setting to your requirements then you can start change to change the rest of the setting to suit your requirements. Here are some more setting that you might want to change take a look at the next few screens.
- This Screen is to setup the order in which the **HTML** will be displayed.

c:\gsak\macros\FindStatGen3.gsk

FindStatGen Section Order - Group 1

1 Finds by Month Enabled

2 Milestones Enabled

3 Distance from Home Enabled

4 Cache Type Enabled

5 Diff/Terr Enabled

6 Owner Enabled

7 US State map Disabled

8 Canadian Province map Disabled

9 European map Disabled

10 Australian map Enabled

11 World map Disabled

12 Days of the week Enabled

13 Container type Enabled

14 Notes Enabled

15 FTFs Enabled

16 Special Enabled

17 Other statistics Enabled

18 Placed Disabled

19 Other Maps Disabled

20 Bearing Enabled

21 Best Month Enabled

22 Year Cache Placed Enabled

23 Finds To Today Enabled

24 Notes B Disabled

25 Finds by Found Date Disabled

OK Cancel

- Here is the Numbers Options settings Screen.

Some Numbers

Totals: ☒

Consecutive: ☒

Best Time Periods: ☒

Fastest: ☒

Total Distance: ☒

Closest/Furthest: ☒

Closest displayed:

Lat/Lon Extremes: ☒

Centroid: ☒

Oldest/Youngest: ☒

Archived: ☒

FTFs: ☒

Logs: ☒

OK Cancel

- Here is your Special Caches Screen.

Special Caches

#	Type	Code	Description
1	Trad	GCT7DC	The Rail Trail Bridg This is my 1st Cache Found on 14
100	Trad	GC19M43	Wakey Wakey Rise & S This is my 100th Cache Found on
200	Trad	GCJQ47	River Bend This is my 200th Cache Found on
250	Trad	GC1C0VD	Sudoku Braeside 2 This is my 250th Cache Found on
300	Trad	GCM481	Gold Pioneers This is my 300th Cache Found on
350	Trad	GC1QG6T	Wandin Birds This is my 350th Cache Found on

Edit Special Caches

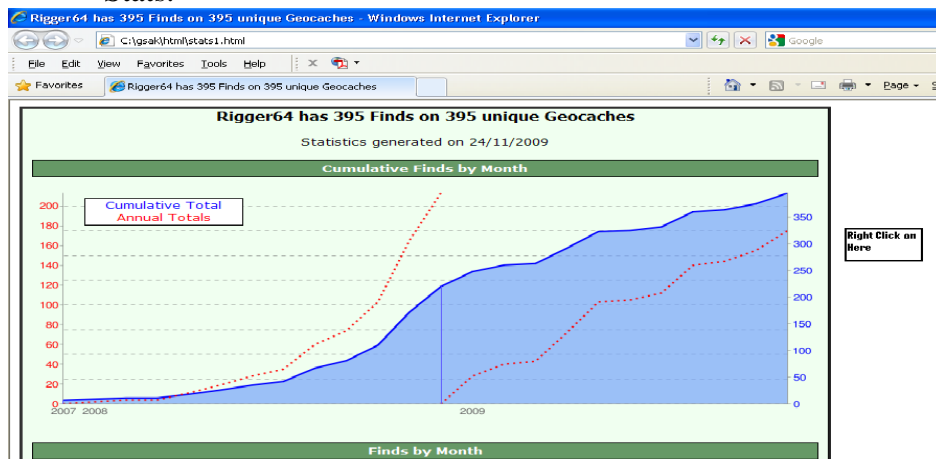
Type Code Description

Set {HEAD for sub-heading}

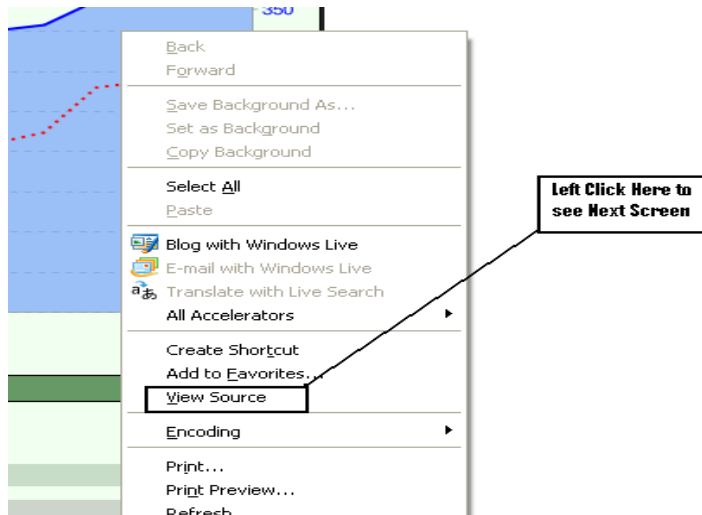
Add/Edit Delete Spell check

Cancel OK

- As you set these setting **Click** on the **Ok** to set the settings as you Click on the **OK** tab it will take you back to the main settings Screen. Once all the settings are to you requirements Click on the Save Tab on the Main screen to save the settings that you have just setup. Now it's time to run the Macro.
- Now Click on the **OK Tab** on the main Settings Screen & the Macro will start running. During the next few Slides you see the next few steps to getting Your Stats onto your Profile Page.
- The next screen you will see will be the First Step of the **HTML** page of your Stats.



- Once you have this screen up you need to **Right Click on the Blank part next to your Stats page** This will bring up a new Menu from this Menu you need to then **Click on View Source**. (See example below)



- Now that you have **Clicked** on **View Source** the next Screen you will see will be the **HTML** coding that will need to be copied to your profile page.
(See example below)

```

1 <!DOCTYPE html PUBLIC "-//W3C//DTD XHTML 1.0
2 Transitional//EN" 'http://www.w3.org/TR/xhtml1/DTD/xhtml1-transitional.dtd'>
3 <html>
4 <head>
5 <meta http-equiv='Content-Type' content='text/html; charset=utf-8' />
6 <title>Rigger64 has 395 Finds on 395 unique Geocaches</title>
7 </head>
8 <body>
9 <div align='center' style='width:770px; background: #F0FFF0; font-family: Verdana,
10 Arial, sans-serif; font-size: 13px; color: black; margin: 1px; border: outset;'>
11 <span style='font-family: Tahoma, Arial, sans-serif; font-size: 16px; font-weight:
12 bold;'>
13 Rigger64 has 395 Finds on 395 unique Geocaches
14 </span>
15 <br />
16 <br />Statistics generated on 24/11/2009
17 <br /><br />
18 <!-- SectionHead CS=1 LCS=1 C=1 Cumulative Finds by Month -->
19 <div style='width:750px; background: #669966; font-weight: bold; line-height: 20px;
20 font-size: 13px; color: white; border: 1px solid #000000; text-align: center;'>
21 <a name='1'></a> Cumulative Finds by Month
22 </div><br />
23 <img src='http://chart.apis.google.com/chart?
24 cht=lxyschs=740x300&chf=bg,s,F0FFF0&chxt=r,x,y&chxr=0,0,395|2,0,213&chxs=0,0000FF|2
25 ,FF0000&chde=_,BIBdByByC6ENFqGzK2NHR0b3jooLqHqmvT0U0p1x6U698v...,AACyFkIwLIN6QsTeW
26 QZCb0emhY,AAAmMBMDTFcIaKgSBWOe8xk...,hYKkmSpusgvSyE023o6a9M...,AAIaMBM6Voe8fihpQDrQu
27 j0k&chxl=1:|2007|2008|2009|&chco=0000ff,ff0000,ff0000,ff0000&ch
28 m=B,76A4FBB0,0,0,0|v,6060FF,0,0,1.0|v,6060FF,0,12,1.0&chg=0,11.74&chls=2,1,0|2,2,4|
29 2,2,4|2,2,4' />

```

HTML Code. Click
anywhere on this
page then Press
Ctrl+A (Select All)
Then Right Click
Then Click Copy.

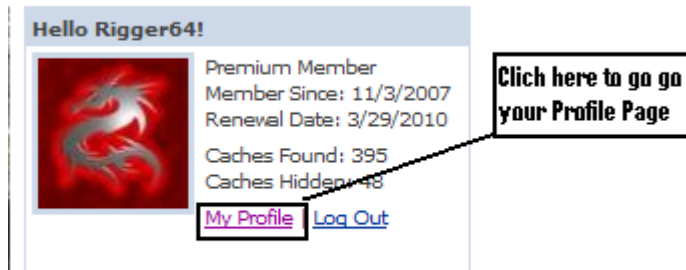
- Now that you have the **HTML Code** you need to **copy** this by **Right Clicking** then selecting **Copy**. or **Pressing Ctrl+A**. **Anywhere within the Coding**.
(See example Below)

```

1 <!DOCTYPE html PUBLIC "-//W3C//DTD XHTML 1.0
2 Transitional//EN" 'http://www.w3.org/TR/xhtml1/DTD/xhtml1-transitional.dtd'>
3 <html>
4 <head>
5 <meta http-equiv='Content-Type' content='text/html; charset=utf-8' />
6 <title>Rigger64 has 395 Finds on 395 unique Geocaches</title>
7 </head>
8 <body>
9 <div align='center' style='width:770px; background: #F0FFF0; font-family: Verdana,
10 Arial, sans-serif; font-size: 13px; color: black; margin: 1px; border: outset;'>
11 <span style='font-family: Tahoma, Arial, sans-serif; font-size: 16px; font-weight:
12 bold;'>
13 Rigger64 has 395 Finds on 395 unique Geocaches
14 </span>
15 <br />
16 <br />Statistics generated on 24/11/2009
17 <br /><br />
18 <!-- SectionHead CS=1 LCS=1 C=1 Cumulative Finds by Month -->
19 <div style='width:750px; background: #669966; font-weight: bold; line-height: 20px;
20 font-size: 13px; color: white; border: 1px solid #000000; text-align: center;'>
21 <a name='1'></a> Cumulative Finds by Month
22 </div><br />
23 <img src='http://chart.apis.google.com/chart?
24 cht=lxyschs=740x300&chf=bg,s,F0FFF0&chxt=r,x,y&chxr=0,0,395|2,0,213&chxs=0,0000FF|2
25 ,FF0000&chde=_,BIBdByByC6ENFqGzK2NHR0b3jooLqHqmvT0U0p1x6U698v...,AACyFkIwLIN6QsTeW
26 QZCb0emhY,AAAmMBMDTFcIaKgSBWOe8xk...,hYKkmSpusgvSyE023o6a9M...,AAIaMBM6Voe8fihpQDrQu
27 j0k&chxl=1:|2007|2008|2009|&chco=0000ff,ff0000,ff0000,ff0000&ch
28 m=B,76A4FBB0,0,0,0|v,6060FF,0,0,1.0|v,6060FF,0,12,1.0&chg=0,11.74&chls=2,1,0|2,2,4|
29 2,2,4|2,2,4' />

```

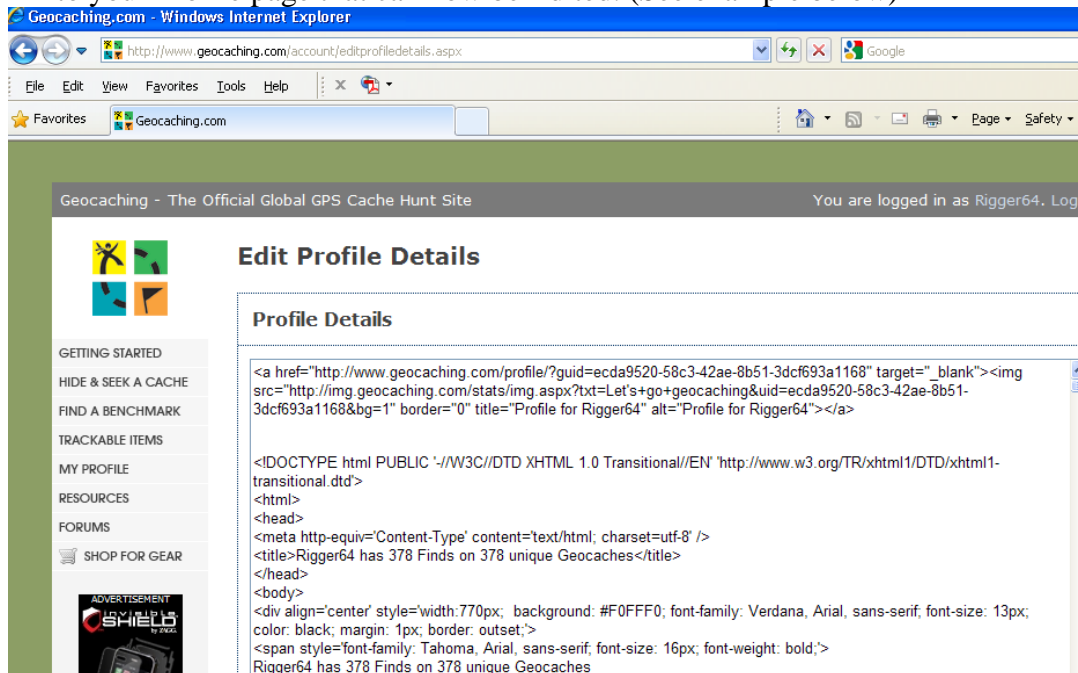
- Once you have **Copied All** of the coding this window can now be closed as we no longer need this window.
Now you need to open you **GC Profile page** by **Clicking** on your **name** on you **GC Page**. (See example below)



- Once you **have Clicked** on the part it will take you to your Profile so that you can editing can begin on your page. (See example below)



- Now that you have **Clicked** on the **My Public Profile** this will now take you to your Profile page that can now be Edited. (See example below)



- Now highlight all the data that will need to be changed & only the Data that needs to be changed you will notice that some of my data has not been highlighted as this will not be getting deleted as it is the little banner that sits above the stats page. (See example below)

Edit Profile Details

Profile Details

[](http://www.geocaching.com/profile/?guid=ecda9520-58c3-42ae-8b51-3dcf693a1168)

<!DOCTYPE html PUBLIC "-//W3C//DTD XHTML 1.0 Transitional//EN" "http://www.w3.org/TR/xhtml1/DTD/xhtml1-transitional.dtd">

<html>

<head>

<meta http-equiv='Content-Type' content='text/html; charset=utf-8' />

<title>Rigger64 has 378 Finds on 378 unique Geocaches</title>

</head>

<body>

<div align='center' style='width:770px; background: #F0FFF0; font-family: Verdana, Arial, sans-serif; font-size: 13px; color: black; margin: 1px; border: outset;'>

Highlight all the data all the way to the bottom of the page. Leaving your Banner untouched.

User Banner

- Now that you have Highlighted all the Data that you want to delete press the Backspace Key on your keyboard this will delete all the highlighted data so now you should have an all but blank dialog box/page. (See example below)

Edit Profile Details

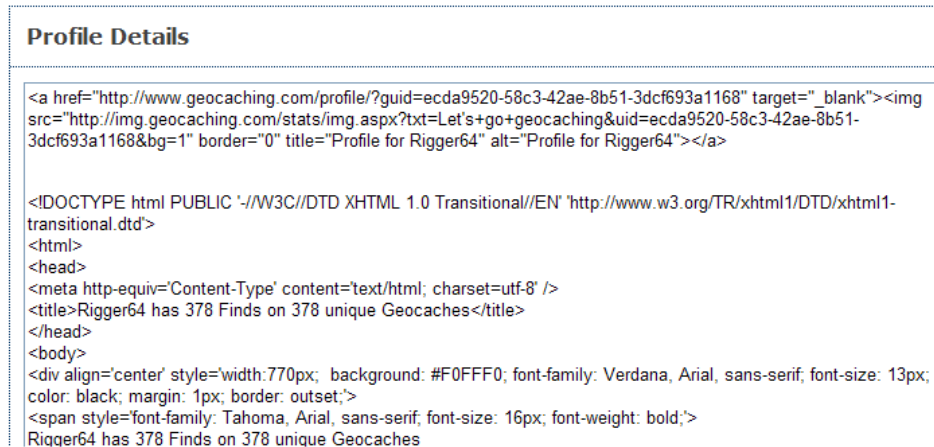
Profile Details

[](http://www.geocaching.com/profile/?guid=ecda9520-58c3-42ae-8b51-3dcf693a1168)

Profile page with all the data Deleted.

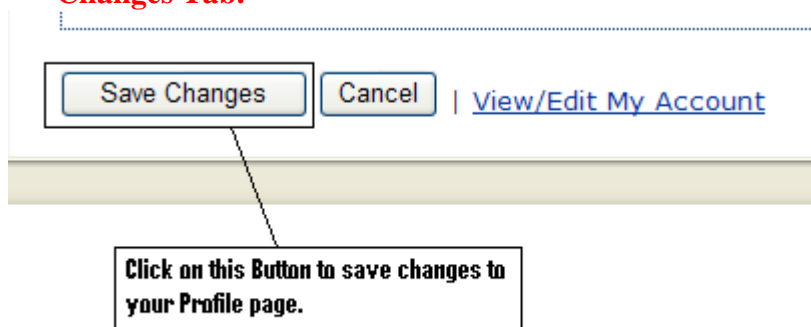
- Now that you have deleted all the old data you can now insert the new data that you copied from the HTML page before. By **Right Clicking** on any part of the page & selecting **Paste** or **Ctrl+V**. (were nearly there)(See example below)

Edit Profile Details



Right Click on the Blank part of the page then click Paste or Press Ctrl+V (Paste). To paste the new Data were the old Data Was.

- Ok now were almost there Now all you need to do is **Click** on the **Save Changes Tab**.



- That's it Were all done Now go checkout your Public Profile.
- Here are some Keyboard Shortcut for you.
- By Pressing & holding Ctrl key the letter you will be able to access the shortcut when you see the Ctrl+(the letter). It means to press & hold the Ctrl key the tap the Letter that corresponds to the Shortcut you want.
- Ctrl+A = Select All**
- Ctrl+C = Copy**
- Ctrl+X = Cut**
- Ctrl+V = Paste**